

ANTALYA COAST

*Marinas • Bays • Cruise
Yacht Manufacturing
Diving • Water Sports*

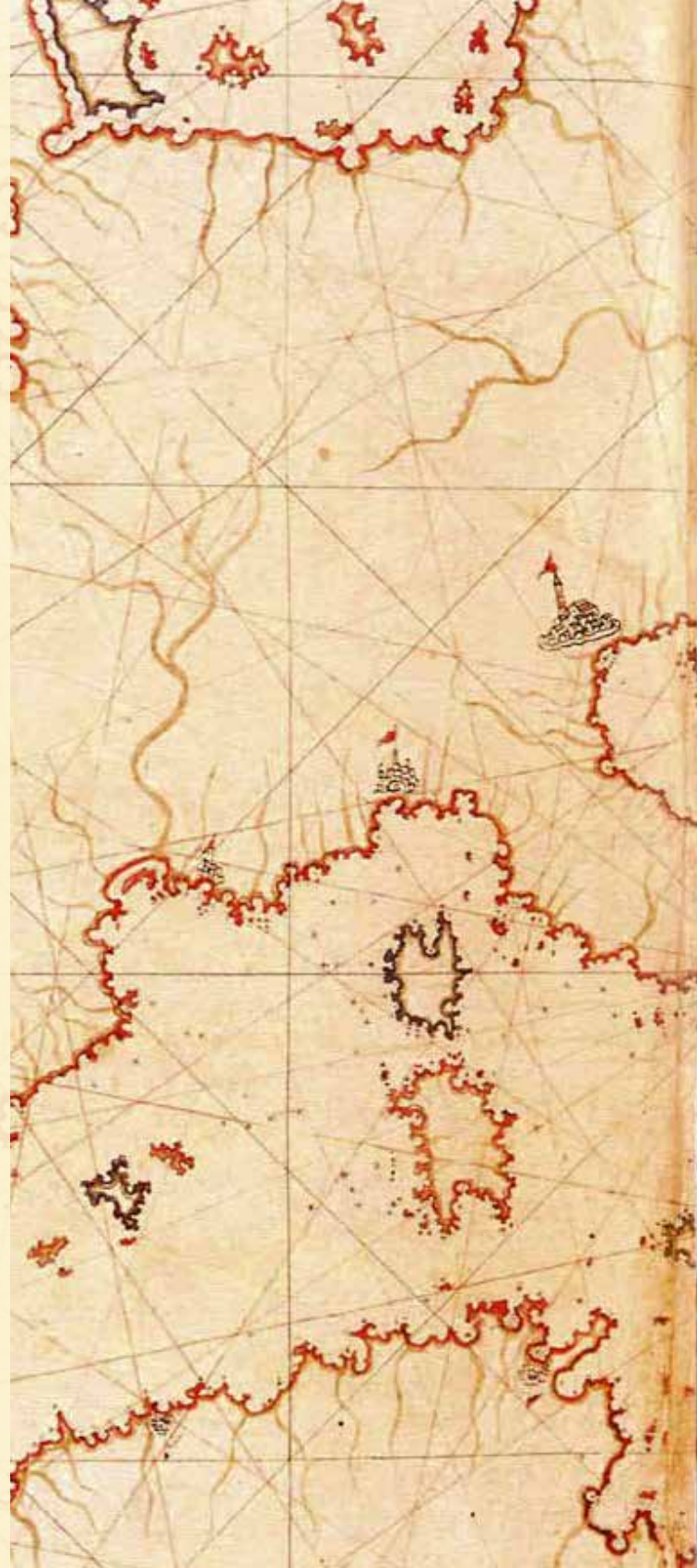


Piri Reis Map

Piri Reis map which was drawn in 1513 is the oldest map which shows all of America. Although the Vinland Map is older it only shows part of North America. Piri Reis map includes North and South America, Greenland and entire area of Antarctica. The map was drawn by Turkish Admiral Piri İbn Haji Mehmed. Piri Reis could not benefit from his most famous work since he was beheaded after an unsuccessful attack in Persian Gulf in 1554. The map disappeared after his execution and was found buried within a batch of stone by a group of historians who were working at the Harem section of Topkapı Palace in 1929. A lot of claims have been made about the map since it was very detailed. Some of them have even claimed that so much detail could only have been obtained from the photographs taken at high altitude.

Piri Reis Map was not prepared by modern map drawing methods which are composed of horizontal and vertical lines that are used to determine the position. The map was prepared by an older method which was developed by Dulcert PORTOLANO. Instead of latitude and longitude lines there are compass roses that show the directions on the key points and there are direction lines that spread out of these compass roses radially. The aim of these maps, which are called as Portolano Maps, was to guide the seamen from harbor to harbor instead of finding the position which is a more modern method. Therefore, comparing the details of Piri Reis map with the detail of modern map is very difficult. Another characteristic of Piri Reis Map are the notes written on it.

These notes are composed of a lot of different notes reach up to Columbus' discovery of a new world for the sea monsters.





*Europe Map, Piri Reis, Kitab-ı Bahriye
(a copy belongs to 16th century)
Istanbul University Library. No: 6605*

Dear Sea Lovers,



The activity area of our Chamber covers an area of nearly 800 km of coastline in one of the most favorite tourism centers in the world with Kalkan county of Antalya on the west to Anamur of Mersin on the east. Along this coastline sea tourism is extremely rich and developed and the Blue Flag record holder of Turkey with its 200 beaches and 6 marinas.

You will witness the unique nature, the most blazing sun and the sea that gives sense to the blue in our region which plays host to plenty of ancient civilizations.

Besides Antalya has an important role in Yacht Building Industry and is counted amongst the 5 most important centers in the World as a Mega Yacht Construction Center.

You will have an unforgettable experience with the limitless services provided in marinas you visit through the coastline, blue cruise and boat excursions with the crystal clear waters at the natural bays, rich underwater life, various water sports activities in which you can attain the peaks of your adrenaline.

Our region will be happy to welcome you and also the Antalya Chamber of Shipping, together with its member companies will be happy by making your visit a most enjoyable experience.

Best regards,
IMEAK Chamber of Shipping Antalya Branch Office

INDEX

8

Marinas

Yacht
Manufacturing

Important
Bays

36

34

40

Blue
Cruise

54

46

Daily
Tours
&

Diving
Tourism

Beaches

66

Water
Sports

69 Climate
Weather Condition

70 Important Phones
Storm Calendar



MARINAS

 Kaş

 Finike

 Kemer

 Marinas

 Diving Points

 Blue Cruise - Departure
 Blue Cruise - Arrival
 Daily Boat Excursions

MANAVGAT

SIDE (Selimiye)

ALANYA

GAZI PAŞA

ANAMUR

ANTALYA

 Antalya

 Kaleiçi

 Alanya

 Gazipaşa

KAŞ MARINA

36° 12' 19" N – 29° 37' 27" E





Marina Information

<i>Marina Name:</i>	Kaş Marina
<i>Lighthouse:</i>	Fl.(4) Y 10sn 6m 3M
<i>VHF Channel:</i>	73 – 16
<i>Call Sign:</i>	“KAŞ MARINA”
<i>Berthing Capacity:</i>	472
<i>Docking:</i>	160
<i>Floating:</i>	100 tonne



Why Kaş Marina

- Kaş has a lot of sheltered and preserved bays within its 20 nautical miles and lies in close range to two International airports which have direct connection to Europe’s big cities.
- The Marina is protected to the north and east winds by the surrounding mountains, to the south winds by the Çukurbağ Peninsula and to the southwest winds by the floating breakwater.
- It is a fascinating town with its 9,000 population composed of Turkish, English, German and other foreign cultures.
- Kaş has a quite mild climate over the winter months and is sunny a large part of the year.
- It is right in the middle of Lycia Federation and its previous name was Antiphellos. There are magnificent centers of the antique history around it such as Patara, Xantos, Simena and Arykanda.



Marina Services

- *Marina Office*; information, sea wireless communication, agency service for the entrance and exit operations, Sea Entrance Door Service for entrance and exit operations, daily weather forecast, Telephone-Fax-Photocopy-Internet-mail, flight ticket, hotel reservation, car renting
- *General*; water, electricity, laundry, phone, tv satellite, toilet-shower, toilet-shower for handicapped, rental store, car park, tannoy system, helicopter, wi-fi
- *Harbor*; mooring system by berthing gear, 24 hrs. mooring boats, diver, aqualung filling, mega yacht berthing quay
- *Security*; 24/7 security service, cameras, watchtower, fire warning and extinguishing system
- *Gas station*; 24 hrs. gas service, diesel fuel, premium gasoline, engine oil
- *Environment and waste collection*; waste water and bilge water intake, solid waste and waste engine oil collection stations, recycling
- *Social*; yacht club, swimming pool, beach, hotel, trip areas, supermarket, yacht materials shop, restaurant, cafeteria-bar, ATM, charter and travel agencies, yacht broker and insurance services, tennis court, souvenir-antique carpet shop, Turkish bath-sauna-spa massage
- *Technical*; paint and polyester works, motor-machine-outboard maintenance repair, electricity - electronic, wooden-furniture, lathe-metal, sail-sailor's hammock, rigging works, ventilation - cooling, inflatable boat - life-raft, winter care, accumulator control and charge, ventilation and bilge control, engine run-up, general cleaning
- *Causeway*; 100 tonne travelling crane, 45 tonne haul, land park, pressurized draught



Other Informations

Address: Uğur Mumcu Caddesi,
Bucak Denizi, Acısu Mevki,
Kaş – ANTALYA - TURKEY



Phone: +90 242 836 3700
Fax: +90 242 836 3472
E-mail: info@kasmarina.com.tr
WEB: www.kasmarina.com.tr

SETUR FINIKE MARINA

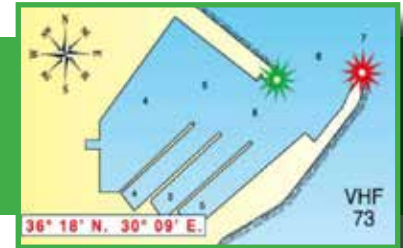
36° 17.6' 40" N – 30° 09.2' 00" E





Marina Information

<i>Marina Name:</i>	Setur Finike Marina
<i>Lighthouse:</i>	Fl. R 3s 13m 6M Fl. G 3s 13m 6M
<i>VHF Channel:</i>	73 – 16
<i>Call Sign:</i>	“SETUR MARINA”
<i>Berthing Capacity:</i>	320
<i>Docking:</i>	150
<i>Floating:</i>	80 tonne



Why Setur Finike Marina

- Setur Finike Marina which is one of the 11 Setur Marinas, open throughout the year and providing you excellent mooring conditions with its maintenance and repair facilities.
- The marina was opened in 1997 and is located in the center of Finike which has a Border gate that enables yachts their entry and exit and located in the south of Turkey.
- Finike county is famous for its oranges, bitter oranges and lemons and also one of the irreplaceable locations of yachters in the summer and winter seasons.
- The Marina is situated in a region that attracts visitors with a variety of interest areas such as Lycia cities, antique areas Olympos and Yanartaş, Saint Nicholas Church and Museum and also has a lot of, beyond comparison, beaches that have Blue Flag.
- Finike is a typical Turkish town with its restaurants, bars, shopping centers, banks and health institutions that are open throughout the year and within walking distance of facilities.



Marina Services

- *Marina Office;* information, sea wireless communication, daily weather forecast, phone-fax-internet, taxi
- *General;* water, electricity, laundry, dish washing area, phone, toilet-shower, toilet-shower for handicapped, car park, wi-fi
- *Harbor;* mooring system by berthing gear, 24 hrs. mooring boats, diver
- *Security;* 24/7 security service, cameras, fire warning and extinguishing system
- *Gas station;* 24 hrs. gas service
- *Environment and waste collection;* waste water and bilge water intake, solid waste and waste engine oil collection stations, recycling
- *Social;* yacht club, park and walking areas, supermarket, yacht materials shop, restaurant, cafeteria-bar, ATM, charter and travel agencies, shopping stores, car renting, ticket, coiffeur, heliport, bank
- *Technical;* haul-throwing, draught, steel shore
- *Through the subcontractor;* winter maintenance, entrance and exit operations, various technical maintenance repairs



Other Informations

Address: Setur Finike Marina,
Finike
ANTALYA - TURKEY



Phone: +90 242 855 5030
Fax: +90 242 855 5031
E-mail: finike@seturmarinas.com
WEB: www.seturmarinas.com

G-MARINA KEMER

36° 36' 3" N – 30° 34' 21" E





Marina Information

<i>Marina Name:</i>	G-Marina Kemer
<i>VHF Channel:</i>	73
<i>Call Sign:</i>	“G MARINA KEMER”
<i>Berthing Capacity:</i>	230
<i>Docking:</i>	140
<i>Floating:</i>	60 tonne



Why G-Marina Kemer

- G-Marina Kemer which is among the yacht harbors located in Turkey’s southern coasts and boasts 42 certificates for international standards regarding its services provided within its 50.000 m² sea area and 46.000 m² land area.
- It has been granted the award of “5 Golden Anchor” by the International Yachting and Marina Business Union (TYHA) regarding its geographical position and high level service provision contained within this special place.
- G-Marina Kemer and the beaches located at the both sides of it have Blue Flag status.
- The marina is established in pine forests at the foot of the Taurus Mountain and also an important location due to its close proximity to antique cities such as Phaselis, Olympos, Aspendos, Side, Perge and Thermessos. In addition, it is only half an hour distance to the ski resort and hunting farms.



Marina Services

- *Marina Office;* information, sea wireless communication, Sea Entrance Door Service for entrance and exit operations, daily weather forecast

- *General;* water, electricity, laundry, dish washing area, phone, tv-satellite, toilet-shower, toilet-shower for handicapped, car park, wi-fi, doctor, nurse

- *Harbor;* pilot boat, diver

- *Security;* 24/7 security service, cameras, fire warning and extinguishing system

- *Gas station;* 24 hrs. gas service

- *Environment and waste collection;* waste water and bilge water intake, solid waste and waste engine oil collection stations, recycling

- *Social;* library, yacht club, swimming pool, beach, hotel, trip areas, supermarket, yacht materials shop, restaurant, cafeteria, bar, bank, ATM, exchange office, travel agencies, tennis court, car renting, taxi

- *Technical;* maintenance and repair service ashore for 150 yachts at the same time, yacht maintenance ateliers, expert technicians, international standards, 60 tonne travelling crane, 20 tonne haul



Other Informations

Address: G Marina Kemer
07980
Kemer – ANTALYA – TURKEY



Phone: +90 242 814 1490
Fax: +90 242 814 1552
E-mail: marina@gmarinakemer.net
WEB: www.gmarinakemer.net

SETUR

ANTALYA

36° 49' 57" N – 30° 36' 28" E





Marina Information

<i>Marina Name:</i>	Setur Antalya Marina
<i>Lighthouse:</i>	Fl. R. 3sn 6M Fl. G. 2sn 6M
<i>VHF Channel:</i>	72
<i>Call Sign:</i>	“SETUR ANTALYA MARINA”
<i>Berthing Capacity:</i>	235
<i>Docking:</i>	150
<i>Floating:</i>	75 - 200 tonne



Why Setur Antalya Marina

- The marina opened in 1991 and is 10 km to the west of city center and 30 km to Antalya International Airport.
- The marina has a 30.000 m² dry dock area, with a travelling crane of between 75 and 200 tonne capacity and 900 m² yacht paint-maintenance hangar for providing the grounding, launching and draught services, besides all sorts of repair and maintenance services that can be provided by the other businesses that are operating within the marina.
- Setur Antalya Marina has been granted the award of “5 Golden Anchor” by the International Yachting and Marina Business Union (TYHA) regarding its environmental awareness and high quality service and also granted a “Blue Flag” by Europe Environmental Education Institution (FEE).
- The guests of the Marina which has a magnificent setting sheltered against the winds and storms, benefits from the rich culture and art life of Antalya that enriches the heart of Tourism throughout the year. In March and April, it is possible to ski in Saklikent and swim in the sea.
- Antalya is the leading city in the world regarding its longest period for golf playing, thus provides big opportunities to the golf fanciers.



Marina Services

- *Marina Office;* information, sea wireless communication, daily weather forecast, phone-fax-internet, taxi
- *General;* water, electricity, laundry, dish washing area, phone, toilet-shower, toilet-shower for handicapped, car park, wi-fi, rental store
- *Harbor;* mooring system by berthing gear, 24 hrs. mooring boats, diver
- *Security;* 24/7 security service, cameras, watchtower, fire warning and extinguishing system
- *Gas station;* 24 hrs. gas service
- *Environment and waste collection;* waste water and bilge water intake, solid waste and waste engine oil collection stations, recycling
- *Social;* sport areas, market, yacht materials shop, restaurant, cafeteria-bar, shopping stores, car renting, agencies, ticket, recreation areas, swimming pool, beach, coiffeur
- *Technical;* haul-throwing, draught, yacht paint and maintenance hangar
- *Through the subcontractor;* winter maintenance, entrance and exit operations, various technical maintenance repairs



Other Informations

Address: Büyük Liman Mevki, Liman Mah.,
Liman 2. Caddesi, No: 40,
07130, ANTALYA - TURKEY



Phone: +90 242 259 3259
Fax: +90 242 259 1010
E-mail: antalya@seturmarinas.com
WEB: www.seturmarinas.com

ANTALYA

KALEIÇI MARINA

36° 50' N – 30° 36' E





Marina Information

<i>Marina Name:</i>	Antalya Kaleiçi Marina
<i>VHF Channel:</i>	73 – 16
<i>Call Sign:</i>	“ANTALYA KALEIÇİ MARINA”
<i>Berthing Capacity:</i>	100



Why Antalya Kaleiçi Marina

- The marina is operated by Antalya Metropolitan Municipality and is just in front of the city and has 100 boats berthing capacity and has a depth of 6-7 m within the harbor.
- The marina has intense traffic at its harbor mouth as it is where the commercial boats are moored and the boats are connected with berthing gear. In addition, there are yacht material shops and ateliers regarding the boat repairs.
- The wreck of the submerged vessel Saint dei Die is close to the front of the marina in Antalya. Diving centers organize tours at this and at other attractions.
- The marina is surrounded by restaurants, cafes and bars and a sea police station is also located within the marina and by exploring the old Antalya streets behind finding the historical places, sights and restored hotels.



Marina Services

- *Office*; information, reservation, price list, daily and weekly weather forecast, wireless communication
- *General*; water, electricity, toilet, taxi, car park
- *Harbor*; mooring system by berthing gear, 24 hrs. mooring boats, diver
- *Security*; 24/7 security, fire warning and extinguishing system
- *Environment and waste collection*; waste water and bilge water intake and waste engine oil collection stations
- *Social*; restaurant, cafeteria-bar, ATM, market, park areas, amphitheater, beach
- *Museum*; Toy Museum, Marine Biology Museum



Other Informations

Address: Selçuk Mah., Iskele Caddesi,
Eski Zabıta Karakolu, Kaleiçi, 07070,
Muratpaşa - ANTALYA - TURKEY





Phone: +90 242 248 4533
Fax: +90 242 248 4530
E-mail: iletisim@antalyaulasim.com.tr
WEB: www.antalyaulasim.com.tr

ALANYA MARINA

36° 12' 5" N – 29° 36' 9" E





Marina Information

<i>Marina Name:</i>	Alanya Marina
<i>VHF Channel:</i>	73 – 16
<i>Call Sign:</i>	“ALANYA MARINA”
<i>Berthing Capacity:</i>	275
<i>Docking:</i>	200
<i>Floating:</i>	100 tonne



Why Alanya Marina

- Alanya Marina is located on the east of the Antalya gulf and provides the opportunity of reaching 70 nautical knots further to the east for the yachts which do the Marmaris–Kaş–Kekova–Finike–Kemer tour.
- The marina provides the opportunity for more comfortably visiting Turkey’s East Mediterranean coasts and Kyrenia coasts of Turkish Republic of Northern Cyprus and is preferred by plenty of yachters with its shopping opportunity for yacht materials and the other needs and various social activity areas.
- Alanya is a well-cared, clean and smooth developing city where 120,000 people reside year round. Of this total 15,000 residents are from 32 various countries, but mainly from Germany, Ireland, England and Austria.
- It is an attractive center with its long beaches extending along both sides of the city where natural beauties abound together with antique cultural ruins.
- Services provided within the Alanya Marina, which will become a new over-wintering center, have been arranged according to the needs of the yachters who live in their yachts especially in the moderate climatic conditions of the winter months.

Marina Services

- *Marina Office*; information, sea wireless communication, entrance and exit operations, daily weather forecast, phone-fax-internet, reception services
- *General*; water, electricity, laundry, phone, toilet and shower, car park, dry cleaning, baggage room, wi-fi
- *Harbor*; mooring system by berthing gear, 24 hrs. mooring boats, diver, pilot boat
- *Security*; 24/7 security service, cameras, fire warning and extinguishing system
- *Gas station*; gas service (during summer; 08:00 – 20:00 / during winter; 09:00 – 17:00)
- *Environment and waste collection*; bilge water intake, solid waste and waste engine oil collection stations
- *Social*; yacht club, swimming pool, beach, hotel, trip areas, supermarket, yacht materials shop, restaurant, cafeteria-bar, ATM, travel agencies, yacht broker and insurance services, tennis court, souvenir-antique carpet shop, Turkish bath-sauna-spa massage
- *Technical*; wintery cover manufacturing, haul-throwing, land park, maintenance and repair
- *Causeway*; 100 tonne travelling crane, 25 tonne haul



Other Informations

Address: Akhan Mevki, Yat Limanı,
07400
Alanya - ANTALYA - TURKEY



Phone: +90 242 512 1219
Fax: +90 242 512 1234
E-mail: info@alanyamarina.com.tr
WEB: www.alanyamarina.com.tr

GAZİPAŞA MARINA

36° 15.8' N – 32° 16.8' E





Marina Information

<i>Marina Name:</i>	Gazipaşa Marina
<i>VHF Channel:</i>	73 – 16
<i>Call Sign:</i>	“GAZIPAŞA MARINA”
<i>Berthing Capacity:</i>	200
<i>Docking:</i>	100
<i>Floating:</i>	80 tonne



Why Gazipaşa Marina

- It is an important harbor for cruising and shipping on the route from the Aegean and West Mediterranean to the East Mediterranean countries. The marina is safe for the sailors since it is well protected against all sorts of weather conditions by the help of Taurus Mountains, a durable breakwater and the hill that is just to the south.
- With regard to tourism it is targeted to develop the Gazipaşa – Anamur coastline which is becoming a more attractive region day by day.
- Gazipaşa which is an important center of Antique Pamphylia civilization also very rich with regard to archeological sites.



Other Informations

<i>Address:</i>	Aydoğan A.Ş. İskele Caddesi, 47/A, Alanya - ANTALYA - TURKEY
<i>Phone:</i>	+90 242 511 8888
<i>Fax:</i>	+90 242 511 4740
<i>E-mail:</i>	info@gazipasamarina.com
<i>WEB:</i>	www.gazipasamarina.com



YACHT MANUFACTURING

The yachts and boats which are manufactured by at least 360 companies who serve with the latest technology and international standards within the sector are being exported to the whole world especially to USA, England, United Arab Emirates, Holland, Italy and France.

Turkey is one of the top **5** countries in the world within the **World Yacht Manufacturing Industry** in regard of its experience and high quality in the field of the boat manufacturing sector.





Since the first slipway which was built in 1227 in Alanya the sector has continued to grow in Turkey; boat, motor yacht, sailboat and mega yacht manufacturing are one of the most important production units at our shipyards. İstanbul and Antalya are the leading cities in this regard. The other important centers are; Marmaris, Kocaeli, Bodrum and Izmir.

Boat Manufacturing in Antalya:

Antalya is in the ideal position for manufacturing boats and yachts with its experienced workforce, in addition to good quality of production and low cost, the advantage of easy carriage regarding the reaching the sea. Antalya Free Zone forms the base of the sector which consists of 52 of the 80 companies that are located in Antalya region.

- ✓ Each production is designed within the design offices of the companies by the experienced engineers, architects and well equipped ship crew according to the customer's requests.
- ✓ The companies operating within the Antalya Free Zone are at the same time serving Antalya Setur Marina and Port Akdeniz for all sorts of boats', yachts' and mega yachts' maintenance and repair.
- ✓ The basic production in Manavgat is composed of classical wooden boat and steel-wooden mixture gulets.

IMPORTANT BAYS

DEMRE - MYRA - ÇAYAĞZI

Demre is located at the west of Antalya, is an important agricultural city with its history rooted to the 3rd Century B.C. and its environment.

At the same time thousands of guests visit Demre which is a religious shrine together with an open-air museum with its rock graves, ancient theatre for 11 thousand people, antique harbor and sunken city.

Yacht Mooring

A breakwater wall exists on the southwest of the harbor which was built in order to protect the Gulet Quay. However, the area is not sheltered too much against to the winds coming from west.

Tour boats or private yachts which come from other harbors generally anchor outside the breakwater. Within the harbor, although the base is covered with sand, the holding is powerful. As a shelter Kekova island is safer to stay for a couple of days.



*Important Places
to Visit:*

Myra Antique City,
Saint Nicholas
Church, Saint
Nicholas Museum,
Rock Graves,
Sunken City,
Andriake Harbor,
Çayağzı Beach,
Sülüklü Beach,
Taşdibi Beach,
Burguç, Aşıklar
Cave, Salyangoz
Bay, Gökkaya Bay,
Simena (Kaleköy)



KEKOVA ISLAND & ÜÇAĞIZ BAY

Kekova Island is sheltered against almost all the winds coming from every direction and provides flat and convenient anchoring places. An entrance from east and west can be done into this area and the night lights are helpful for the night entrances.

✓ **Afroz Waterside Thicket**

The bay is located at the west side of the Kekova road and has a depth of approximately 12-15 m and the base is covered with sand. The bay is convenient for protection against to the Meltem which is a local wind blowing from the North and the holding is quite good.

✓ **Kaleköy**

There is a small village on the Kekova road which is accessible both from west and east. The castle within the village should be visited and anchoring in front of the village is also possible. However, if the wind increases the holding will not be strong and safe.

✓ **Kale Bay**

The bay which is located on the east side of the castle is open to the south winds and attention should be paid to the near-surface rocks that exist on the west side.





Tersane Bay



Kekova



Karalos Bay

✓ ***Polemos Waterside Thicket***

The bay is located at the end of the west side of Kekova road and has a depth of 5-10 m. The base is covered with mud and provides a good protection in every respect.

✓ ***Tersane Bay***

The bay was used as a shipyard throughout the Ottoman period and is located at the end of the northwest of Kekova Island where an Orthodox Church ruins exists. It is convenient for relaxing and swimming.

✓ ***Karalos Bay***

The bay is located at the south part of the Kekova Island where the holding is quite strong and provides good shelter. The cave at its entrance is attractive.

✓ ***Üçağız Harbor***

The harbor is one of the most popular anchoring places and well-protected, the base is covered with mud and the holding is strong. At the entrance attention has to be paid to the submerged ruins of Simena which is an old Lycian city. The depth is 9-10 m in the channel and entrance in the night is quite difficult.



Polemos Waterside Thicket

Reminder:

The water tanks can be filled up at the wharf of the quay restaurants within the region and even you may stay at night for free of charge. However, you might need to receive service from the restaurants.



The south-west coastline of Turkey is the most attractive region of Mediterranean. A lot of bays and islands were formed in various sizes since the South Taurus Mountains reached out towards the sea in many places.

BLUE CRUISE

On the mysterious and mostly quiet coastlines commencing from Antalya, Kemer, Olympos or Adrasan to the tourism regions of the Aegean; Kuşadası, Bodrum, Marmaris, Göcek and Fethiye it is possible to see the natural and rich flora, especially pine

forests and mountain slopes and the countless ruins which exist today from ancient times.

Besides the natural and historical beauties swimming in a crystal clear sea is like an aquarium, watching different fish species is very pleasant.



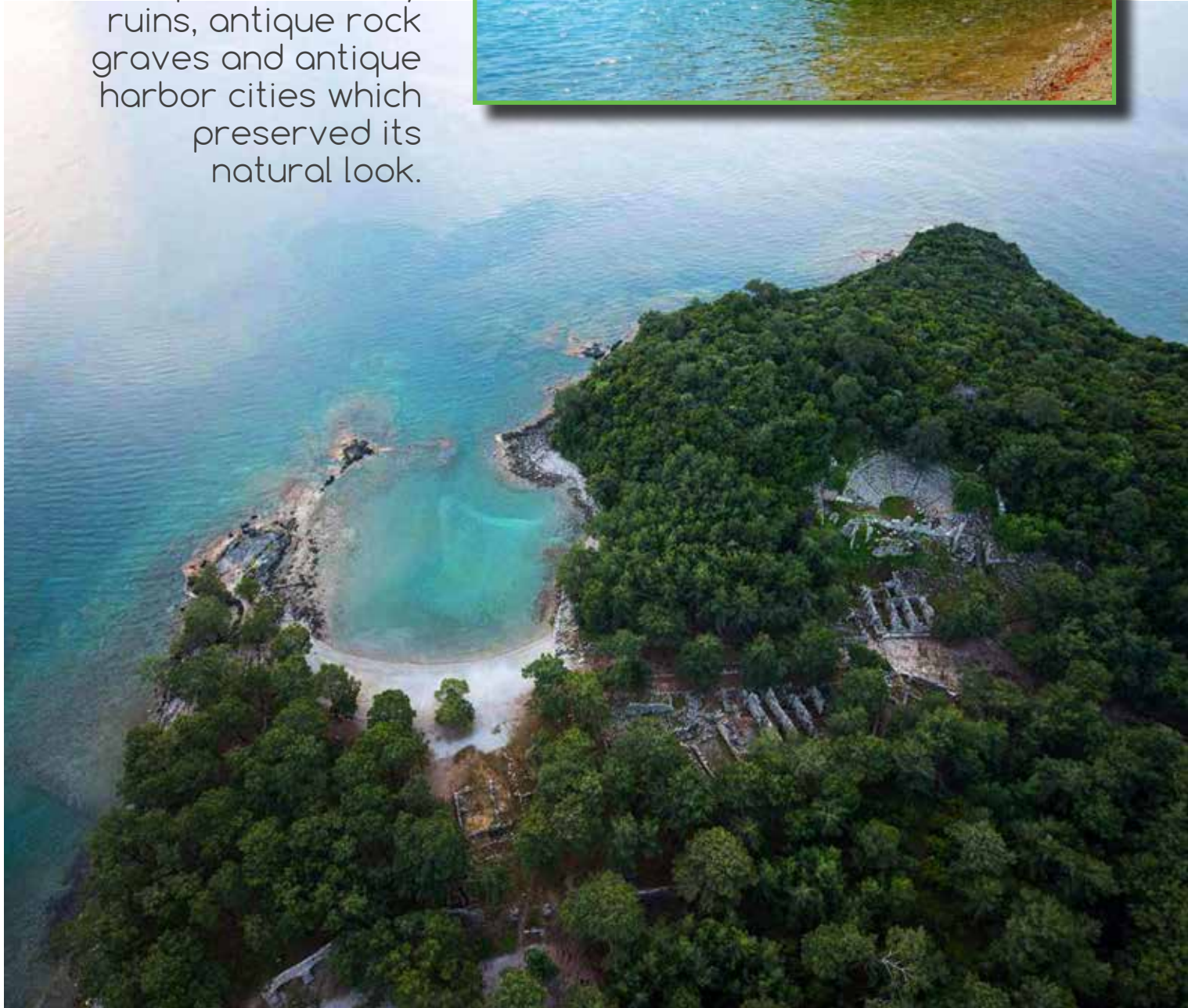


Routes:

- Antalya – Kekova – Antalya
- Antalya – Fethiye (Göcek) – Antalya
- Antalya (Kemer) – Adrasan * Myra * Gökkaya
* Simena * Üçağız * Finike * Ceneviz Limanı
* Olimpos * Phaselis – Antalya (Kemer)

Reminder: When private renting is done, the Aegean coasts and Greek islands could be added to the route.

On the Antalya shores which host numerous ruins that merge under the name of Antique Lycia; it is possible to see antique sunken city ruins, antique rock graves and antique harbor cities which preserved its natural look.







Discoveries you could find from yachts:

- ✓ Rich varieties of Turkish Cuisine, fresh vegetable, fruit, meat, fish, chicken, salad and pastries
- ✓ All kinds of hot-cold, domestic/foreign alcoholic and non-alcoholic drinks
- ✓ Games such as backgammon and playing cards, relaxation and sunbathing areas
- ✓ Swimming, diving with snorkel, fishing, water sports and excursions with small boat

DAILY TOURS & BEACHES



From the wharfs, marinas or harbors which exist along the coastal county of Antalya, by boats that depart in the morning hour giving daily excursions to the bays, sunken city, cave, island and historical areas.

The trips that take in the unique panorama of the Taurus Mountains against the blue waters of Mediterranean Sea, sun and history last until the evening hours and the lunch is included in the price.



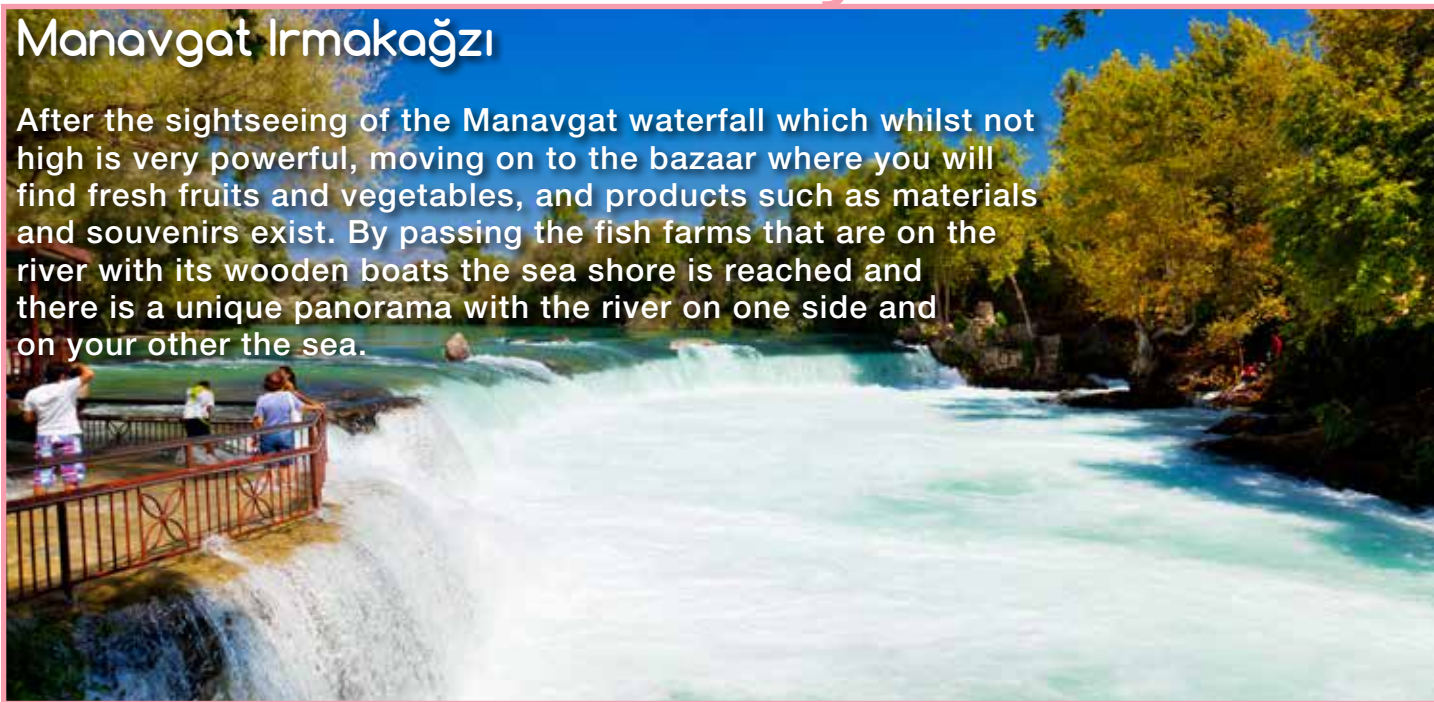
Tour Outgoings;

- ✓ Alanya
- ✓ Manavgat Irmağı
- ✓ Side
- ✓ Antalya-Kaleiçi
- ✓ Kemer
- ✓ Demre
- ✓ Kekova
- ✓ Üçağız
- ✓ Kaş

Daily Tours

Manavgat İrmaköğzi

After the sightseeing of the Manavgat waterfall which whilst not high is very powerful, moving on to the bazaar where you will find fresh fruits and vegetables, and products such as materials and souvenirs exist. By passing the fish farms that are on the river with its wooden boats the sea shore is reached and there is a unique panorama with the river on one side and on your other the sea.





Side

By the boat tour with the unique panorama of the Taurus Mountains Yunus island's bay is reached where there is diving and snorkeling to be done.



Alanya

It has an intensive program by the visits to Fuğla Site, Çamur Cave, Cleopatra Beach, Kale Site, Kızıl Tower, Korsanlar Cave, Fosforlu Cave and Ulaş Bay.

Kaleiçi

After the Düden waterfall visit the accompanying panoramas of Falez, Siçan Island and Çaltıcak adding to the tour.



Kemer

Antique Phaselis Bay, Cleopatra and Mehmet Ali waterside thicket, Alacasu Cennet Bay and 3 Adalar are programmed for visits.

Demre-Kekova

At the end of the tour for Kaleköy, the historical Sunken City, the Rock Graves, Antique Simena and Kekova, Myra Antique City and Saint Nicholas Church can also be programmed.

Kaş

The tour in which you see in close-up many beautiful bays and the Lycia Graves, whilst giving the opportunity to see the Meis Island which is close to the coast.

Kalkan

Kaputaş Beach, Mavi Cave, Akvaryum Bay, Mud Bath, Firnaz Bay, Sıçan and Yılan Islands are visited.



BEACHES

An aerial photograph of a busy beach. The water is a vibrant turquoise color, transitioning to a lighter, sandy hue near the shore. Numerous people are scattered across the beach, some sitting on towels, others walking or standing. The beach is wide and sandy, with a clear demarcation between the water and the shore.

The length of the coasts of Antalya that are the most important tourism center of Turkey including the 640 km of coves and outcrops and the 500 km of beaches. Since the mountains on the west coasts of Antalya run perpendicular to the sea, the sea is deep and the beaches are not lengthy. However, on the coasts of Kemer, Tekirova, Kumluca, Finike, Demre and Kaş there are natural and longer beaches.

Since the mountains run parallel to the sea on the east side of the city, a plain is formed between the mountains and the sea, in this way magnificent beaches were formed with fine sand commencing from the Antalya to the close of Side and Gazipaşa.

In addition to these fine sandy natural beaches with beautiful panoramas in Antalya the beach season last a long time as the climate and sea water temperature make them usable between March and December.

There are a large number of beaches which have Blue Flag Awards in the Antalya region.



Cleopatra Beach

This 2 km long fine sanded beach is located to the west of Alanya. It is said that this is where Cleopatra bathed and the sea is shallow.

Incekum Beach

The beach is located 20 km west of Alanya and framed by pine groves, natural and fine sand.

East Beach

The beach which is located on the east of Alanya is composed of 14 km coast together with Keykubat Beach.

Sorgun Beach

It is a pretty natural beach and coast which is 6 km distant from the road that goes south when on the way to Manavgat.

Koru Beach

This beach located in Gazipaşa and the sea is the only sea that filters itself. 2 of the 3 natural pools are ideal for those who learn to swim.

Lara Beach

The beach is located 12 km east of Antalya, has fine sand and surrounded by pine forests.

Karpuz Kaldıran Beach

It is on the west of Lara Beach where Düden Waterfalls flow into the sea. The beach is used as Military Rest Camp and has fine sand and shallow sea.

Adalar Beach

The beach is located in Karaalioğlu Park and is rocky.

Konyaaltı Beach

It is on the 3 km west of Antalya and in 1,5 km length and with sand and pebble.

Reşat Island Beaches

This natural beach is 15 km west of Antalya and previously was the recreation area of Sultan Reşat.

Kemer Beach

It is a natural beach from Beldibi site to Tekirova formed with fine sand. In the center of Kemer, Municipality Beach and the Moonlight Beach are the preferred beaches for the bathers.

Phaselis Beach

It has an uncommon beauty with a combination of history, mountain, sea, forest, a shallow bay and fine sand.

Finike Coasts

It has natural beaches of Mediterranean coasts with its fine sands and beautiful panorama.

Adrasan Shores

It is a natural harbor of Antalya and has a beautiful panorama, is rocky and fine sanded.

Patara Sand Beach

Patara is specially protected environment area (*Ovagelemiş*) and is on the Kaş-Fethiye road and 45 km away from the county center. Patara is the largest and the longest sand beach of Turkey with its 800 m width and 15 km length.

Demre Shores

Demre is one of the counties of Antalya's west region, has sea that is famous for its clarity and cleanliness. The beaches vary from fine sands to pebbled, having long or short different coastal strips which are beyond comparison.

Ulaş Beach

It is on the 6 km west of Alanya center.

Kaputaş Beach

The beach is located on the west of Antalya and its water is cool and turquoise. This color is formed by the water which flows under the ground and percolates through the sands on the sea shore.



The two of the five different sea turtle species that live in Mediterranean are *Caretta Caretta* (large sea turtle particular to Atlantic Ocean) and *Chelonia Mydas* (green turtle) use 17 areas of Antalya shores for egg laying in sandy beaches.

Belek, Manavgat, Tekirova, Çıralı, Olympos, Adrasan, Kumluca, Kale (Demre) sand beaches are the best egg laying areas.

Sea turtle populations exist starting from the east of the mouth of Eşen Stream of Patara sandy beach towards to the Gelemiş village, until the mountainside that is on the east end of the sandy beach and the sand of the beach which is approximately 7 km in length which is very fine and clean.



Konyaaltı Beach



Patara Beach



Karpuzkaldıran Beach




Ulaş Beach



Kaputaş Beach



Incekum Beach

A scuba diver in a black wetsuit and blue fins is swimming over a sea turtle on a coral reef. The diver is wearing a mask and has bubbles rising from their regulator. The sea turtle is swimming towards the left. The background is a clear blue ocean with some coral and small fish visible.

More than half a million domestic and foreign tourists participate in diving within the Antalya region in any given year. Within the Turkish waters half of the favorite diving points are in this region.

DIVING TOURISM

Diving in ANTALYA

- The sea cliffs that have a depth of 14-25 m in the center of Antalya are convenient for diving.
- A French military transport ship that sank in front of the Antalya Harbor is submerged between 20-32 m deep. However, since this is close to the harbor mouth, where the boat traffic is intensive a permission is needed to be obtained from the Antalya Governorship for this diving point.
- The north-east side of Sığan Island is attractive with its rocky deep structure that extends to 22 m and with a cave that is located on the east. Attention has to be paid to the surface currents which are formed according to the density of the daily excursion boats and the wind force of the Northeaster that blows from the west.
- After its separation for scrap in 1998 the Dornier was sunk at the offshore of Antalya yacht harbor in 2010 to serve for diving tourism and is submerged at 25 m deep.



Diving in KEMER

■ Kiriş Cave Bay and Akvaryum Bay extend to the depth of 18 m and 12 m respectively.

■ Fener-Tünel reef is 3-18 m deep. At its mouth there is a wide tunnel covered with corals, sea lilies, colorful sponges and oysters.

■ Pati Submerged is a historical ship submerged to a depth of 5-12 m.

■ Paris submerged which is 25 m deep and on the sand base is the most favorite diving point of the region. The ship is called as "Balta kafa" and it is thought that it was built in 1896.

■ X reef, located in the Kemer Üç Adalar Region, starts from 15 m and goes down to a depth of 55 m. White grouper and Dusky grouper can be seen in flocks.

Piramit Taşlar is formed by 3 large rock pieces. It is 10-30 m in depth. Besides the fish species, nudibranch could also be observed.

Again in the same region, Adventure reef is 55 m in depth and convenient for the expert divers in general.



It is possible to view fish species that are seen in the Red Sea. Mediterranean seals, stingray, moray, barracuda and tuna shoals can be observed.



The relics taken out from the Gelidonya Antique Submerged are being exhibited at the "Museum of Underwater Archaeology."

Gelidonya Antique Submerged

The submerged vessel was discovered by a sponge fisherman in 1954 and is 26–28 m in deep. During the research diving carried out in 1960 it was determined that the ship was belonged to the Late Bronze Age. It was the first underwater excavation whose excavation was completed under the leadership of a diver archeologist and carried out according to the land excavation standards.

With the discovery of the stone anchors, which were found during the 1994 research, it is thought that the vessel originated from the Middle East. Analysis within the boat seems to suggest that the bushes were used as bearing materials for the load and it is thought that the ship sank towards the end of 13th century B.C.

Diving in FİNİKE & DEMRE

- Finike Suluin Cave is regarded as the longest underwater cave of the Asian Continent and is at a depth of 122 m and convenient for professional divers.

- There are more than 30 diving point in Demre.

- Mavi Cave is extending to 30 m and is composed of different channel and islet.

- Antrum cave is extending to 50 m where hard and soft corals can be seen only in this part of the Mediterranean.

- Iberian Coast is a historical shipwreck submerged at a depth of 10-40 m.

- By passing through cracks and channels between the rocks, the cave is reached which is a diving point that is composed of 3 separate caves which are in different sizes.

- At the Yelkenli Gemi Submerged, which is 8-12 in depth, nudibranch, parrotfish, octopus and squid are being observed.

- Eğri Liman is in 15-25 depth and the wall where the historical amphora exist is 12-40 m in depth. At the Reef which is extent to 100 m (Coral Reef) has corals which are particular to Mediterranean.



Diving in KAŞ

Kaş is located on 192 km west of Antalya, has become one of the most popular diving centers of Turkey by the launching of entrepreneur Uğur Eroğlu in 1986. Kaş has announced its name to the underwater world by the oldest submerged shipwreck found so far that is called Uluburun Batığı and each year thousands of domestic and foreign divers come to Kaş.

- Küçük Çakıl fringing reef is 13 m in depth and convenient for training diving and for night diving by professional divers. Rare species such as octopus, slipper lobster and crab are being observed.
- Gürmenli Adaları are composed of two islands and within the bigger one there is a magnificent wall, however within the small one Cappadocia-like rocks are being seen.
- Kanyon and Dimitri (Pamuk) Submerged are one of the most favorite points. At the entrance of the canyon two walls that are 4 m apart run smoothly down until 22 m. The walls are covered with corals and sponges. Besides the ship which is submerged near to the Canyon, it is possible to enter into the cave whose entrance is 18 m in depth and exit from the chimney which is 12 m in depth that is found at the top.

Kaş has a fame worldwide and it is the best of Turkey in diving. Most diving centers exist in the county where day and night diving are done in all seasons of the year.





■ Sea grasses, giant mussels, shrimps, antique amphora, dusky grouper and sea anemones, sea turtles could be found at the Oasis Reef.

■ Historical amphora and Neptün reef with its small canyon starts from 7 m and are known also as Üç Kayalar. There is a coast guard boat submerged at 29 m in depth.

■ At the depths which are outside of Heybeliada it is possible to see the longspine snipefish, barracuda and stingray. Approximately at the 12 m in depth, amongst the green grasses there lies the upper ruins of a shipwreck. There is a high probability to see the Grey Triggerfish and among the short grasses seahorses can be seen.

■ Çift Tepeli Uçan Balık reef starts at 5 m in depth and goes down until 100 m in depth. Since the flow is changeable diving should be started from the anchor chain.



■ “L” shaped Tünel’s entrance is in 4-5 m width and 18 m in depth. It is smooth until 30 m. Tünel is 40 m in total and its walls are covered with pink and white corals.

■ Deve Taşı has become popular in recent years and took its name because it looks like a Bactrian camel. Two peak points are 14 m in depth and the gap of these two peaks is 16 m in depth. West and North sides go down deep however the south and east sides go down to 30 m in depth.

■ Likya Submerged is ideal for afternoon diving since it is a shallow diving point and a small wooden boat used previously by a diving center in Kaş.

■ It is possible to see 2000 years old amphora in Besmi Island at 37 m depth. Besides the unbroken ones which extant today some of the amphora’s mouth is in 1 m diameter.

■ Çapa Banko diving point took its name from the antique stone and metal anchors that exist in the region.



KAŞ ULUBURUN SUBMERGED



Uluburun III is the name given to the wooden ship which was authentically constructed by Hayrullah Kes through 360 Derece Tarih Araştırmaları Çalışma Grubu (360 Degree History Research Study Group), SAD (Sualtı Araştırmaları Derneği) (Underwater Research Association) and Kaş Deniz Tarihi Araştırmaları Derneği (Kaş Sea Research Association) which was formed by volunteers and it was sunk by SAD in a ceremony at Hidayet Koy site in 29 October 2006.

Again by the contributions of SAD, Uluburun shipwreck which was discovered in 1982 has been reconstructed as “Uluburun Archeological Area” in a similar way.

This area called Arkeopark is unique in the world and forms a basis for young archeologists for their education studies.



The findings gathered by the excavation and archeological works are being exhibited in Bodrum Sualtı Arkeoloji Müzesi (Bodrum Underwater Archeological Museum).



Diving in KALKAN

- At the Mavi Cave which goes down to 15 m deep sunlight forms a blue shiny phosphor by reflecting from the sea bottom.
- York Düşesi Sakarya Submerged is a historical cargo ship which starts at 5 m and reaches to 15-20 m in depth.
- Frenk Duvarı exists on a perpendicular cliff and reaches to 60-80 m in depth.
- At Adalar which is composed by Fare and Yılan Islands diving with snorkel is being done. At Yılan Island it goes down to a depth of 80-100 m.



- Firnaz Bay goes down 20-25 m in depth, however Dolphine Reef goes down 30 m in depth.
- Öksüz Island is famous with night diving and there the walls go down to 35 m in depth.
- Heybeli is composed of 4 different diving points and diving is done to 45-50-80 m in depth.



Diving in ALANYA & MANAVGAT

- A special authorization is required for diving to the wreck of the American War Plane B-24 which fell in 1944, 200 m offshore of Manavgat.
- Akvaryum diving point which extends to 25 m in depth is convenient for night diving.
- It is possible to see the historical broken amphora at 29 m depth.
- There is a Pirate cave at 12 m depth of the Pirate diving point and there is a shipwreck in 25 m depth of it.
- Orta Cave is 15-34 m deep where the brown meagre, moray, Spiny lobster, dusky grouper, octopus and two-banded seabream can be seen.
- Aşıklar region can extend to 10-34 m in depth where rich underwater creatures are seen.
- Damlataş Cave (Rambo) starts at 13 m in depth which is one of the most favorite diving regions of Alanya and its stalactite remind the Damlataş Cave.
- Fosforlu Cave is also convenient for the night diving and comprises of two separate caves at 8 and 12 m depth.



SIDE UNDERWATER MUSEUM DIVESIDE



Side Underwater Museum is the first underwater museum of Europe and Turkey, it has been initiated and developed by the Antalya Chamber of Shipping under the scope of Batı Akdeniz Kalkınma Ajansı (BAKA) (West Mediterranean Development Agency) Year 2014 Development of Alternative Tourism Financial Support Program.

There are 110 sculptures in 5 different themes in Side Underwater Museum, located approximately 1.5 nautical mile offshore of Side; at 11, 18 and 22 m depths.

The sculptures consist of 110 figures found in Side Underwater Museum were constructed over a period of 9 months, covering the themes of the Turkish War of Independence, Camel

Train on Deserts, Mevlevis, Sea God Poseidon of mythological ages and the Expo 2016 Antalya's theme of "Children and Flowers".

The sculptures were placed into the sea by special methods in order to not to harm to sea fauna, with the area delineated by buoys so that boats and ships are banned from anchoring there.



WATER SPORTS

There are more than
300 water sports business within
the Gazipaşa to Kaş coastline.





Antalya is the world leader in the water sports field, and through its regional structure the water sport activities can easily be done.





Within the businesses that exist in nearly all of the hotels and beaches on the coast; a lot of water sports services are being provided such as jet ski, parasailing, water ski, windsurfing, sailboat, banana, pedalo, ringo and canoe.



In Mediterranean the summers are hot and dry and the winters are warm. Short-term heavy rainfalls seen in the winter months keep the green flora of the region in healthy condition.

CLIMATE

Winds of Antalya

In the Mediterranean which is called as the “Sea of Surprises” describes when the wind follows the shore lines suddenly changes direction and power alterations to come true.

The Karabatik winds which blow intensive and powerfully through the mountains and valleys towards to the sea suddenly might be a burden in the summer months.

The general order of the region is in the way that the thermal north winds in the mornings and the south winds in the afternoons.



In the summer months from mid-day to sunset land and sea breezes do blow. However, in the first months of the summer season fog is seen on the sea continuing from morning to mid-day.

On autumn nights there are powerful winds that blow from Taurus Mountains.

In the winter months the storms occur both from the north and south.

WEATHER CONDITION

The daily weather condition information for 24 hrs. can also be heard at Navtex, given on the VHF 67 channel in the summer months every 3 hrs.

Weather maps could be procured from Marina and Harbor Authority. Information is given in these maps with details such as air pockets which are useful.

Sea Water Temperatures:

- ✓ December – May: 17°-19°
- ✓ June: 24°
- ✓ July–August–September–October: 26°-29°
- ✓ November: 22°

STORM CALENDAR

IMPORTANT PHONES

- Fire Department 110
- Emergency 112
- Traffic 154
- Police 155
- Gendarme 156
- Coast Guard 158
- Denunciation for Forest Fire 177

January

- 2 Storm (3 Day)
- 8 Zemherir
- 17 Storm
- 18 Storm
- 23 Storm
- 25 Intensity of Winter
- 28 Ayandon Storm

February

- 1 Storm
- 4 Storm (3 Day)
- 7 Storm (3 Day)
- 10 Storm
- 13 Storm
- 23 Storm

March

- 1 Storm
- 11 Kocakarı Storm
- 12 Husüm Storm
- 24 Koz Kavuran Storm
- 26 Çaylak Storm
- 29 Storm

April

- 8 Kırlangıç Storm
- 11 Storm (3 Day)
- 16 Kuğu Storm
- 21 Storm (3 Day)
- 29 Storm

May

- 4 Çiçek Storm
- 7 Storm
- 13 Storm
- 17 Filiz Kıran Storm
- 20 Kokulya Storm
- 21 Ülker Storm

June

- 3 Storm (3 Day)
- 10 Ülker Storm
- 22 Gün Dönümü Storm
- 28 Storm
- 29 Yaprak Storm

July

- 11 Çark Dönümü Storm
- 16 Storm (2 Day)
- 22 Storm (2 Day)
- 30 Kızıl Erik Storm

August

- 14 Storm
- 17 Storm
- 20 Storm (2 Day)
- 31 Mircan Storm

September

- 7 Bıldırcın Storm
- 13 Çaylak Storm
- 25 Storm
- 28 Kestane Karası Storm
- 30 Turna Geçimi Storm

October

- 4 Koç Katılımı
- 9 Yaprak Dökümü
- 15 Meryem Ana Storm
- 18 Kırlangıç Storm
- 22 Bağ Bozumu
- 27 Balık Storm

November

- 2 Kuş Geçimi Storm
- 7 Storm
- 28 Storm

December

- 2 Ülker Dönümü Storm
- 9 Karakiş
- 12 Storm
- 19 Storm
- 21 Gün Dönümü
- 28 Storm



ANTALYA COAST

IMEAK Chamber of Shipping

Yeşilbahçe Mh.1471 Sk. Giritli Ali Bey
Evleri No: 3A/1 (VİLLA A) Muratpaşa
- Antalya - TURKEY

P: +90 242 241 0210 (pbx)

F: +90 242 241 0211

www.antalya.denizticaretodasi.org.tr

antalya@denizticaretodasi.org.tr

